

# Advocacy Basics with Investing in Student Potential



January 25, 2022



Our elected leaders are debating and voting on bills that affect you



You can:

1. Let your state elected officials know what matters to you.
  - This helps them best represent you
2. Give feedback on bills that affect you to the committees working on them.
  - This helps make public policy responsive and more effective



# How to reach legislators?

Call, email, or set up a meeting

Give public testimony

- Hotline: 1-800-562-6000
- Find your legislators and legislative district: <https://app.leg.wa.gov/DistrictFinder/>
- 2022 rosters: <https://app.leg.wa.gov/rosters/>
- Email format: [firstname.lastname@leg.wa.gov](mailto:firstname.lastname@leg.wa.gov)
- Committee agendas: <https://leg.wa.gov/>
- Committee sign in (to testify): <https://app.leg.wa.gov/CSI/>





Today, we will give you an **overview** of what is going on and provide **tips** to help you write a message

# OVERVIEW: What happens in a legislative session?

Bills are introduced, debated, and voted on.

Bills are proposals to change state law or spend state money

- Bills must pass through committees to get to the full chamber for a vote.
  - Policy committee
  - Fiscal committee
  - Rules
- Most bills will be amended in this process. Some changes are small, some can completely change a bill.
- Committees can amend a bill. Bills can also be amended when they go to the full chamber for a vote
- Bills need to make it through BOTH chambers, and both chambers must agree on final language
- Then they go to the governor to sign.
  - The governor has veto power.



# Advocacy takeaways

1. Certain leaders have more power in this process.
2. Legislators usually are not policy experts on the issues they vote on.

Advocates who can reach more legislators with a compelling, consistent message have a better chance of influencing the process.

The system relies on advocates to inform it





**TIP:**  
Keep testimony  
to 60-90 seconds.  
Too long? Edit down,  
don't speak faster

- Committee agendas: <https://leg.wa.gov/>
- Committee sign in (to testify): <https://app.leg.wa.gov/CSI/>

# To reach the committee

Best option is to testify. You can do so during the hearing,  
or you can send in written testimony.  
You can also state your position for the record.

**Committee:** Education  **Meetings:** 01/27/22 1:30 PM 

See who has signed in for this agenda item

Instructions on how to create your Legislative Account and edit your profile: [Instructions](#)

1. Select the committee and meeting date and time, then select the bill for which you would like to testify remotely.





- Hotline: 1-800-562-6000
- Find your legislators and legislative district:  
<https://app.leg.wa.gov/DistrictFinder/>

# To reach YOUR reps

You can send them an email or call.  
You can also “comment on this bill” via the bill’s page.  
Comments go to your elected representatives



- Legislature Home
- House of Representatives
- Senate
- Find Your District
- Laws & Agency Rules
- Bill Information
- Agendas, Schedules, and Calendars
- Legislative Committees
- Coming to the Legislature
- Civic Education
- Legislative Agencies
- Legislative Information Center
- Email Updates (GovDelivery)
- View All Links

Bill Information > HB 1980

Search for another bill or initiative:

1980 Bill Initiative 2021-2022 Search

HB 1980 - 2021-22

Removing the prohibition on providing employment services and community access services concurrently.

Sponsors: Taylor, Caldier, Davis, Frame, Leavitt, Lekanoff, Ryu, Santos, Simmons, Ramel, Robertson, Bronoske, Paul, Peterson, Fitzgibbon, Goodman, Wicks, Johnson, J., Valdez, Bateman, Macri, Chopp

**Bill Status-at-a-Glance** ⓘ

See **Bill History** for complete details on the bill

As of Thursday, January 20, 2022 03:25 PM

<b>Current Version:</b> <b>HB 1980</b>	<b>Current Status:</b> <b>HHous, Human Sv</b>
---	--

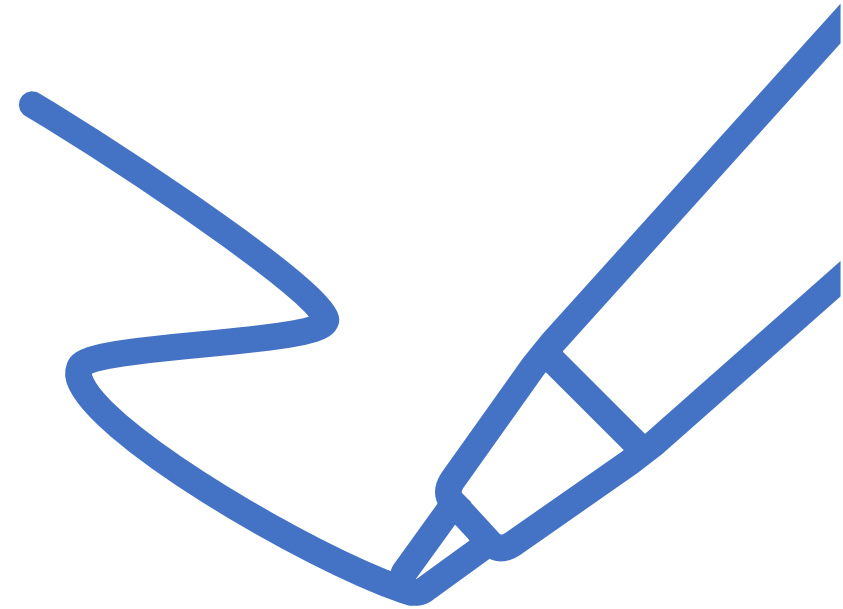
**Where is it in the process?**

	Introduced	In Committee	On Floor Calendar	Passed Chamber
In the House:	●	○	○	○
In the Senate:	○	○	○	○
After Passage:	○	○	○	○

- Comment on this bill
- Get Email Notifications
- RSS Notifications

## TIPS: Message basics

1. **KEEP IT PERSONAL.** Personal stories have the most impact. (Really).
2. **DATA?** If you have 1 strong data point, use it (and use your story to illustrate it). But just keep to the one, at first. Once you have a dialogue, you can share more data points.
3. Connect your story with an action they can take



# Clear simple message

---



1. Who are you?



2. What is your issue?



3. Why do you care?



4. Why should your audience care?



5. What do you specifically  
want them to do about it?

# Who are you?

---



Your name

Your legislative  
district/town/neighborhood

<http://leg.wa.gov/>

Group affiliations,  
if appropriate

# What is your issue?

---



Describe your issue.

What is it you are worried  
about? Or happy about?

Use simple language.

# Why do you care?

---



Why does this matter to you?

How will it change your life,  
or change the life of someone  
you care about?

Tell a personal story.



# Why should your audience care?

---



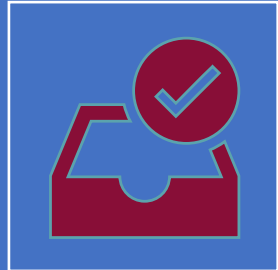
Why should your listener care?

Is this happening in their  
community?

Does it affect them  
personally? Or someone they  
know? Is it expensive/does it  
cause harm ...

# What do you specifically want them to do?

---



Always have a clear call to action – a to-do

Be specific in your request. Do NOT ask for “support.” Too vague. What action are you looking for? A donation? Help getting a bill heard? A vote?

Good afternoon chair and committee members,

**<WHO>** I am Ramona Hattendorf with The Arc of King County, speaking in support of HB 1980. The Arc protects and promotes the rights of people with intellectual and developmental disabilities and helps build inclusive communities. We serve the 36,000 people with IDD across King County.

**<ISSUE>** Our state's insistence on either/or when it comes to day services has isolated people and undermined their well-being. We require people to choose employment support OR community inclusion when often they need both.

**<WHY I CARE>** DDA services are habilitative. This means helping people learn, keep, or maintain skills that are not typically developing. People with IDD need ongoing skill support throughout their lives.

Day services help people maintain essential skills needed to support well-being and interact with their community.

**<WHY AUDIENCE SHOULD CARE>** Employment support is a great day service. But lots of people need a “yes, AND ...” approach.

Maybe they have severe anxiety *and* could benefit from community inclusion during a job search. Maybe they have a job, but it is only a few hours a week *and* they need additional skill maintenance outside it. Or maybe they lost their job, have no immediate prospects, but need support looking for a job while also still engaging in the community.

This bill is a “yes, AND ...” approach so people get the support mix they need for their situation. Same hours of support; flexibility for their situation.

**<ACTION>** Please support and move this bill this session. Thank you.

# 60-second version

Good afternoon chair and committee members

**<WHO>** I am Ramona Hattendorf with The Arc of King County, speaking in support of HB 1980 and advocating for 36,000 people with IDD in King County.

**<ISSUE>** Our state's insistence on either/or when it comes to day services has isolated people and undermined their well-being.

**<Why I care>** DDA services are habilitative. This means helping people learn, keep, or maintain skills that are not typically developing.

Day services help people maintain essential life skills needed to support well-being and interact with their community.

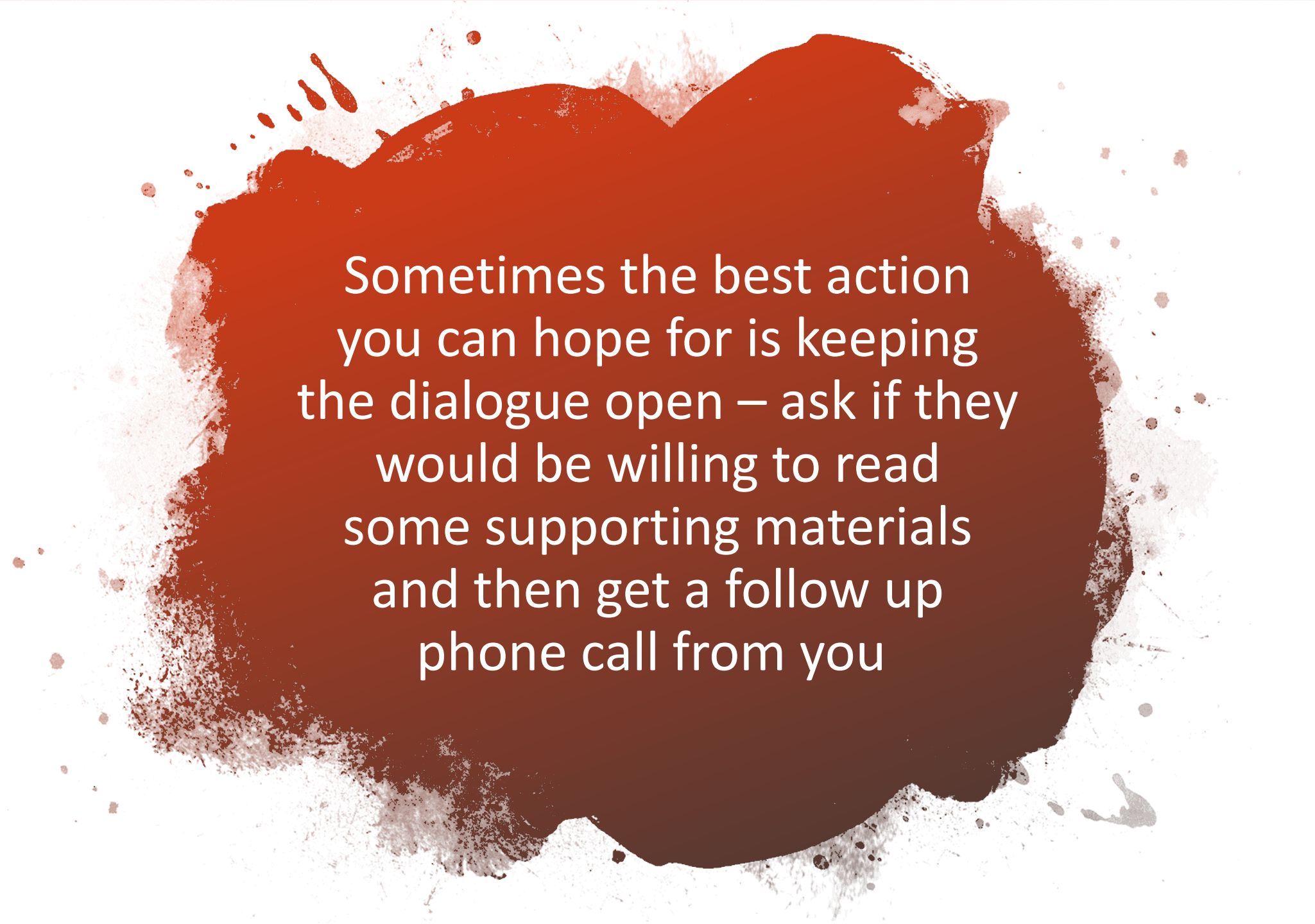
**<Why audience should care>** Employment support is a great day service. But lots of people need a “yes, AND ...” approach.

Maybe they have severe anxiety *and* could benefit from community inclusion during a job search. Maybe they have a job, but it is only a few hours a week, *and* need additional skill maintenance outside it.

**<Action>** This bill is a “yes, AND ...” approach so people get the support mix they need for their situation. Please pass out of committee this session. Thank you.

A large, irregular red ink splatter or blotch is centered on a white background. The splatter has a textured, watercolor-like appearance with various shades of red and some darker, almost black, areas. The edges are fuzzy and spread out, with smaller droplets and splatters visible around the main shape.

WHAT IF THEY  
DISAGREE?



Sometimes the best action  
you can hope for is keeping  
the dialogue open – ask if they  
would be willing to read  
some supporting materials  
and then get a follow up  
phone call from you

## Other places & ways to share your message

---

- Speak at town halls
- Get to know candidates; share your story
- Invite legislators to meet with your group
- Follow them on social media
- Share your advocacy work on social media



LEG.WA.GOV

---

- Look up representatives and senators – including bios and bill sponsorship
- Find your legislative district
- Find committee information
- Find agendas
- Track bills

# Education committees

---

## **House Education**

Covers K-12

<https://leg.wa.gov/House/Committees/ED/Pages/default.aspx>

- Chair: Rep. Sharon Tomiko Santos

## **House Children, Youth & Families**

Covers early learning (birth through preschool)

<https://leg.wa.gov/House/Committees/CYF/Pages/default.aspx>

- Chair: Rep. Tana Senn

## **Senate Early Learning & K-12**

<https://leg.wa.gov/Senate/Committees/EDU/Pages/default.aspx>

- Chair Senator Lisa Wellman

# Investing in Student Potential 2022 Legislative Platform

<https://studentpotential.org/legislative-platform/>

## **Meaningful family engagement and partnership**

- Qualified interpreters
- Timely accommodations & Support for IEP meetings
- Trained & resourced support staff to combat ableism and racism

## **Professional development, training, and technical assistance for school staff**

- Universal Design for Learning and inclusive practices
- Diversity, equity, belonging, and inclusion, and anti-racist trainings

## **Mental health, behavior supports, and social-emotional learning**

- Access to supports for students and staff
- Vetted curriculum for de-escalation
- Support for positive school/classroom climates

## **Funding structures centered on student need**

- Sufficient resources to meet learning needs
- Remove cap on funded enrollment for special education services



# List of education bills

<https://educationvoters.org/resources/bill-tracker/>

Legislators or staff will often ask if there is a bill that covers the issue you are advocating for. You can look at this list of education bills ahead of time.

HB = House bill

SB = Senate bill

